

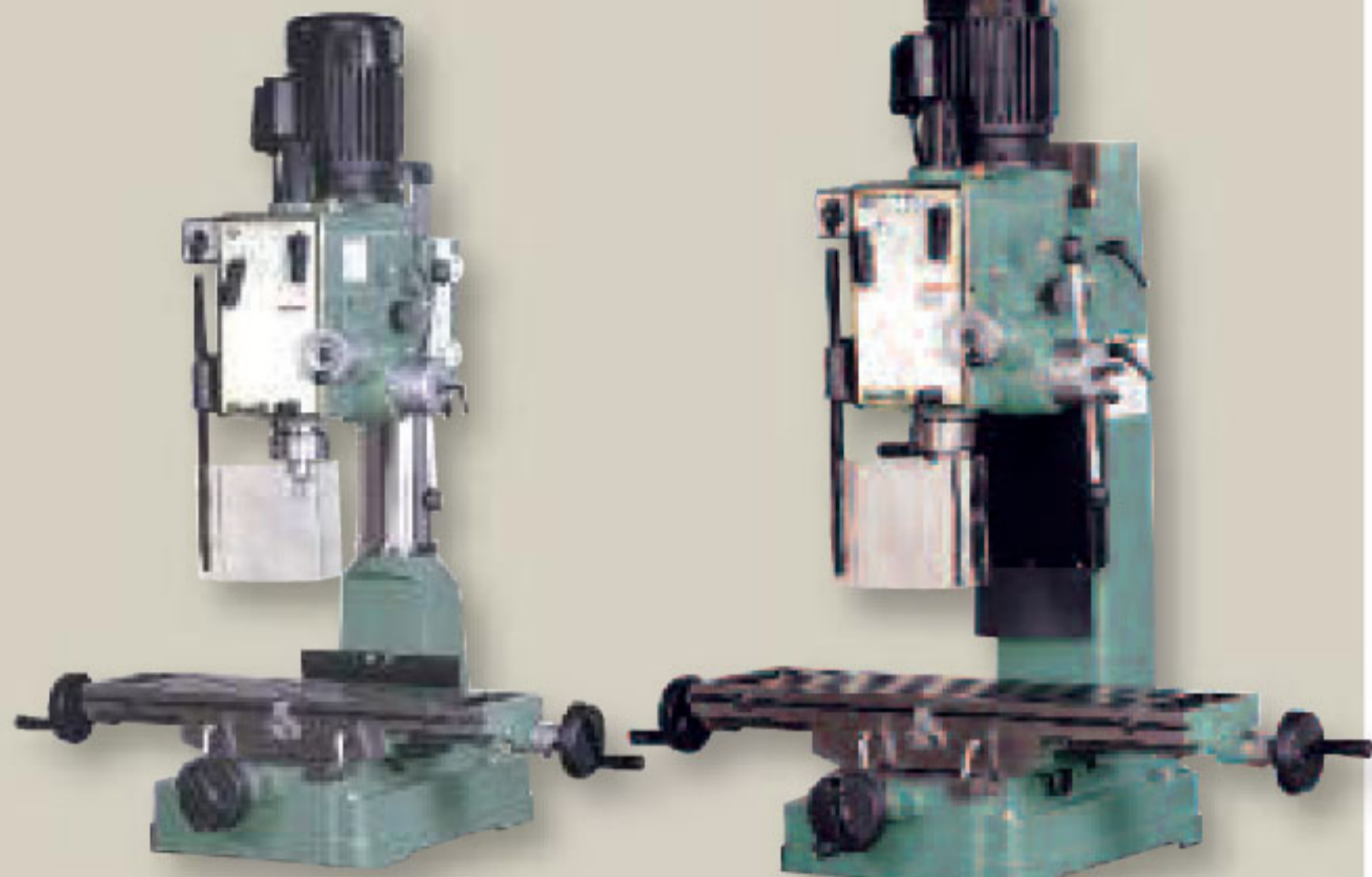
GEARED HEAD MILLING / DRILLING MACHINE

Bench-top models

Models 75-875 M1 / 75-880 M1

Head tilts up to 30° left and 90° right for angle drilling, milling, slotting and more

Forward and reverse switch. 6 spindle speeds (60, 130, 230, 450, 800 & 1500 RPM). See-through chuck guard included. Powered spindle down feed. 1 ½ HP motor.



Model 75-875 M1

\$3799.99

Reg. \$5400.00

Model 75-880 M1

\$4299.99

Reg. \$6200.00

Also available optional stand (#75-885) for models 75-875 and 75-880 only.

\$239.99

Reg. \$350.00



7" X 10" SWIVEL HEAD HORIZONTAL BANDSAW

Model 90-740 M1

Head swivel 0-45° on heavy-duty cast-iron slides. Equipped with coolant system with built-in tank and pump. 4 blade speeds (73, 110, 150, 217 FPM). 1 HP motor.

\$1949.99

Reg. \$2650.00



FALL WINTER

2011-2012 PROMOTION

www.general.ca

14" X 40" GEARED HEAD BENCH LATHE

Model 25-400 M1

40" distance between centers. Headstock runs on 2 precision tapered roller bearings with a 38 mm through-hole. 40 feed rate gearbox with 28 metric or 50 imperial thread sizes. High tensile cast-iron bed for maximum stability. 12 spindle speeds (70-1350 RPM). 1 ½ HP motor.

\$4586.99

Reg. \$7500.00

Shown with optional stand (#25-405).

\$439.99

Reg. \$625.00



NORMAND

www.normand.ca

PRICES ARE IN EFFECT FROM OCTOBER 1ST, 2011 TO MARCH 31ST, 2012

WE RESERVE THE RIGHT TO CORRECT ANY TYPOGRAPHICAL AND PICTORIAL ERRORS WITHOUT NOTICE.

Printed in Canada

DISTRIBUTED BY:

2895 Argentia Road, Unit 6
Mississauga ON L5N 8G6
Tel.: 905.858.2838
Fax: 905.858.2484

4352 Industriel Blvd
Sherbrooke QC J1L 2S8
Tel.: 819.563.6555
Fax: 819.822.0863

4297 des Laurentides East (15)
(via Michelin street)
Laval QC H7L 5W5
Tel.: 450.688.2112
Fax: 4 50.688.4114

752 Olivier Road
Levis (St-Nicolas) QC G7A 2N2
Tel.: 418.831.3226
Fax: 418.831.4229

Metalworking machinery

15" DRILL PRESS

\$1529.99

reg. \$1900.00

Cast-iron base, table and head. 6" spindle travel. Head raises and lowers on the column. 6 speeds: 400, 625, 1125, 1950, 3400 and 5000 RPM. Industrial quality 1 HP motor.

New!



34-156 M1

17" DRILL PRESS

\$529.99

reg. \$730.00

5/8" Chuck with key, laser line marker & see-through chuck guard included

Rotating, 45° tilting, crank-operated rack and pinion worktable. Safety switch. 12 spindle speeds (340 to 2800 RPM). 3/4 HP motor.

75-200RC M1

RADIAL ARM DRILL PRESS

\$629.99

reg. \$770.00

5/8" Chuck with key & see-through chuck guard included

3 1/8" Spindle travel. 9 speeds (295 to 3580 RPM). Table swivels 360°. Table extension provides additional support. 1/2 HP motor.

75-550 M1



6" DRILL PRESS VISE

Item 95-160

\$32.99



4" CROSS VISE

Item 95-400

\$64.99



6" INDUSTRIAL BENCH VISE

Item 95-860

\$249.99



8" HEAVY-DUTY BENCH GRINDER

Item 15-870 M1

Cast-iron wheel guards and dust vents. One-piece, quick adjusting spark guards. Large quick adjust eye shields. Easy-adjust cast tool rests. 1 HP motor.

\$209.99

Reg. \$260.00



BELT SANDER / GRINDER

Item 15-232 M1

Flexible "gooseneck" style work light. Quick change belt tension lever facilitates fast belt changes. Belt sander operates horizontally and vertically, and can be locked at any angle in between. 1/3 HP motor.

\$199.99

Reg. \$245.00



12" SLOW SPEED COLD CUT SAW

Stand included

Model 60-250 M1

Miter stops at 90°, 45° left and 45° right. Coolant pump. 52 RPM blade speed for cutting ferrous materials. Magnetic switch with overload protection. 2 1/2 HP motor.

\$1969.99

Reg. \$2500.00

MILLING / DRILLING MACHINE

Bench-top model

Will allow you to do drilling, milling, tapping, boring and reaming.

Model 75-850 M1

Head swivels 360°. See-through chuck guard provides full 180° frontal protection. 12 speeds from 120 to 2500 RPM. Adjustable stops on table. Included accessories: 1/2" chuck, 1/2" chuck arbor, 3" cutter, 3" cutter arbor, angle vise. 2 HP motor.

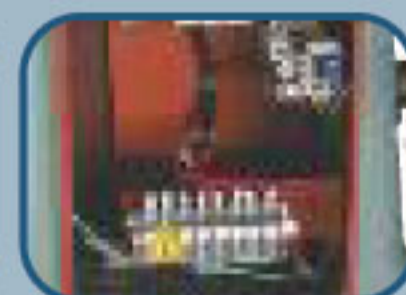
\$2249.99

Reg. 2800.00\$



Magnetic switch and electronically controlled circuitry for added safety

Circuit breaker provides power surge/overload protection for motor, switch and all circuitry.



Shown with optional stand (#75-855).

\$249.99

Reg. \$350.00

HEAVY-DUTY ROLLER STAND

2000 LBS MAXIMUM LOAD CAPACITY

Item 90-805

Heavy-duty cast-iron & steel construction. Chrome-plated ball bearing roller. Adjustable height to suit most shop needs.

\$132.99

reg. \$180.00



HEAVY-DUTY ROLLER "V" STAND

2000 LBS MAXIMUM LOAD CAPACITY

Item 90-810

Heavy-duty cast-iron & steel construction. Chrome-plated ball bearing roller. Adjustable height to suit most shop needs.

\$139.99

reg. \$185.00